



Mfd. by:

**granoceramics**

Vengola P.O. Perumbavoor, Cochin -56

☎ 0484 2861300, 0484 2861301

📞 6282 65 2212 / 8921 43 5246

E-mail: [info@granoceramics.com](mailto:info@granoceramics.com)

[www.granoceramics.com](http://www.granoceramics.com)



*Definitely*  
you can illuminate  
your roof on the day!

**nano ceramic**  
ROOF TILES

## Laying Specifications

The  
**WORLD**  
Prefers best  
Roofing Solution..

**U**ltra modern solution for roofing; what the whole world think & prefers... A wide variety of roofing materials is available, depending on the aesthetic, structural, and economic requirements of consumers. Over the past few years, roofing structures have emerged as an architectural trademark, which along with being eco-friendly, are also visually attractive, reasonably priced, and structurally sound.



### LAYING TECHNICAL SPECIFICATIONS J SERIES

1. 4" x 2"	=	16 gauge (Apollo / Bhushan)
2. 3" x 1 1/2"	=	16 gauge (Apollo / Bhushan)
3. 1 1/2" x 3/4"	=	18 gauge (Apollo / Bhushan)
4. 3/4" x 3/4"	=	16 gauge (Apollo / Bhushan)
5. Round Pipe GI	=	3" B Class (Apollo / Bhushan)
6. Anchor Bolt M 10	=	(Ferry / High fix)
7. Welding Rode	=	(Best Arc / Sun bond)
8. 1" Screws (7" x 25")	=	Patta
9. No. of Screws	=	2
10. MS Square Plate	=	6" x 6" x 1/4"
11. Round Demmy	=	5" x 1/4"
12. MS Flat	=	1.5 x 1/8"
13. Square tube End Cap	=	4 x 2
14. Square tube End Cap	=	3" x 1 1/2"
15. Cutting Wheel	=	14" (Urry Bullet)
16. Cutting Wheel	=	4" (Urry Bullet)
17. Grinding Wheel	=	(Urry Bullet)
18. Paint Epoxy	=	(Amcos / S Dee)
19. Thinner	=	D13
20. Tarple Sheet	=	3 mm
21. Purling Distance	=	Centre to Centre 24.5 cm
22. Minimum Angle of Laying	=	26 °
23. Maximum Angle of Laying	=	may vary on depending the design

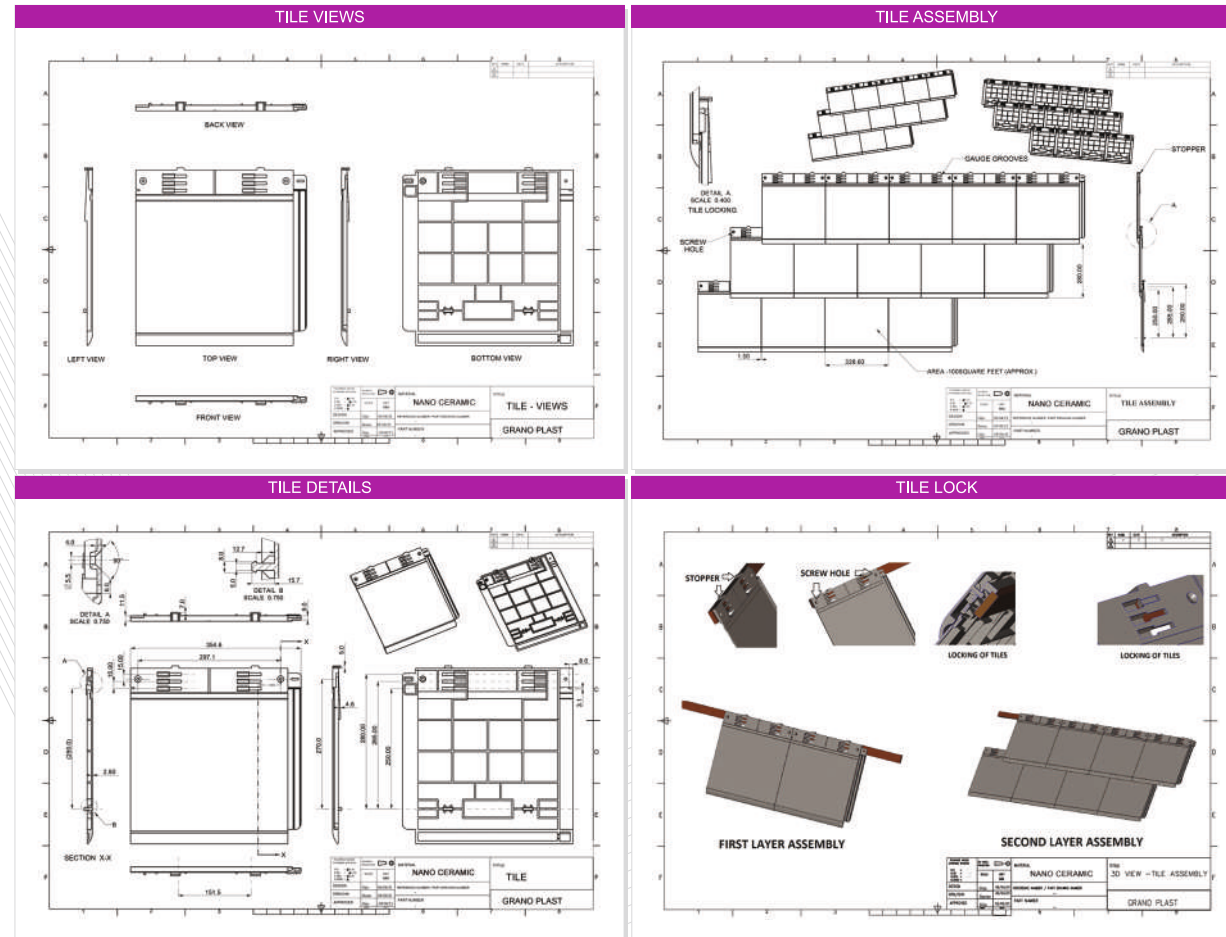
### LAYING TECHNICAL SPECIFICATIONS EU SERIES

1. 4" x 2"	=	16 gauge (Apollo / Bhushan)
2. 3" x 1 1/2"	=	16 gauge (Apollo / Bhushan)
3. 1 1/2" x 3/4"	=	18 gauge (Apollo / Bhushan)
4. 3/4" x 3/4"	=	16 gauge (Apollo / Bhushan)
5. Round Pipe GI	=	3" B Class (Apollo / Bhushan)
6. Anchor Bolt M 10	=	(Ferry / High fix)
7. Welding Rode	=	(Best Arc / Sun bond)
8. 1" Screws (7" x 25")	=	Patta
9. No. of Screws	=	2
10. MS Square Plate	=	6" x 6" x 1/4"
11. Round Demmy	=	5" x 1/4"
12. MS Flat	=	1.5 x 1/8"
13. Square tube End Cap	=	4 x 2
14. Square tube End Cap	=	3" x 1 1/2"
15. Cutting Wheel	=	14" (Urry Bullet)
16. Cutting Wheel	=	4" (Urry Bullet)
17. Grinding Wheel	=	(Urry Bullet)
18. Paint Epoxy	=	(Amcos / S Dee)
19. Thinner	=	D13
20. Tarple Sheet	=	3 mm
21. Purling Distance	=	28cm (1st Slot)   26.5cm (2nd Slot)   25cm (3rd Slot)
22. Minimum Angle of Laying	=	26 °
23. Maximum Angle of Laying	=	may vary on depending the design

**nano ceramic**  
ROOF TILES



*The authentic product...*



## The Light Weight Roofing Solution

In 2015, 3% of the turnover budget turned into R & D Budget which combined with an year hard work of 10 eminent polymer engineers which gave birth to **mfp**.

**mfp** is from a nano ceramic mineral composition with extremely high shock resistant and recognized for being high thermal insulation.

During manufacturing process our material goes through a specific thermal treatment called density polymerization in order to guarantee a better mechanical and thermal resistance.

**mfp** products are more resistant to mechanical and thermal shocks and negligible colour migration.

**mfp** material withstands all seasonal extreme weather changes.

**mfp** material is non-porous and homogenous in all of its forms and therefore doesn't retain any micro organisms.

**mfp** silver oxide technology kills bacteria and fungus from spreading over the surface.

**mfp** products have best die-electric properties which makes it resistant to high electric discharges.

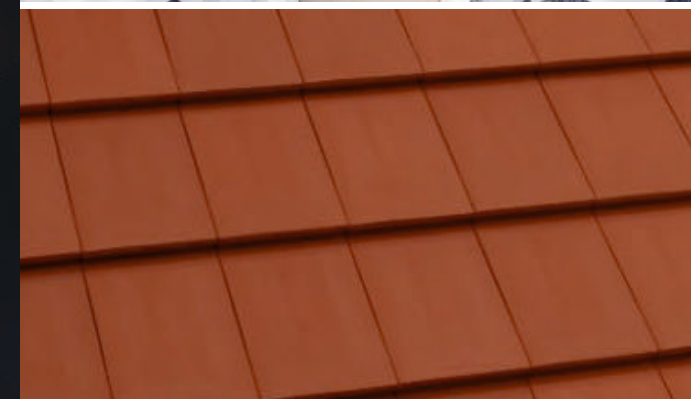


What I stand for is  
What I stand on

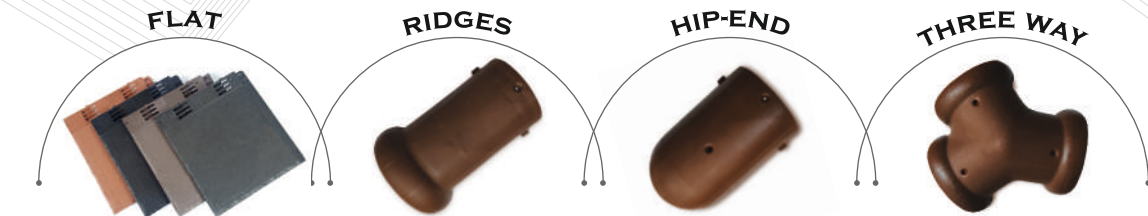
The world's most beautiful landmarks are often topped off with unique roofs that embody not just beauty, but also their architect's style and mastery of roofing technology.

Whether made to protect the home of prince or the poor "Roof can shape history". **mfp** roofing (tile) is one such revolution thus born to embark a whole new saga of Roof tiles. Offers best protection for houses against any weather conditions not compromising elegance in design and colours ensuring individual satisfaction.

The nano ceramic roof tiles are made under strict quality checkup measuring and ensures to save the mother nature unused by her natural resources rigorously.



ULTRA LIGHT WEIGHT  
EU SERIES (FLAT) TILE  
WITH ACCESSORIES

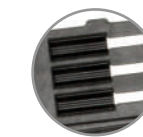


Certifications



PRODUCT SPECIFICATIONS

Material	- Nano Ceramic (Mineral Filled Polymer)
Size	- 367 mm (Length) - 355mm (Width)
Weight	- 600 g
Coverage Area/M <sup>2</sup>	- 10 Pcs./M <sup>2</sup>
Variable Slot	- Slot No 1 = 1 sq. ft (Considering overlap)
	- Slot No 2 = 0.92 sq. ft "
	- Slot No 3 = 0.88 sq. ft "



**nano ceramic**  
ROOF TILES



# Quality that stand for.. Satisfaction

**R**oofing tiles are often made out of clay and placed in a slanting fashion on your roofs. It helps to reduce heat during summers and prevents water clogging during monsoons.

This reason combined with the wide varieties and designs has made roofing tiles the go-to solution for any customer. We should take a look at why Roofing tiles have become a huge phenomenon it is now. From the first picture you drew as a child, roofs have always been about roofing tiles.

With people understanding the importance of roof tiles and a wider variety of products with much better quality and color options available in the market, roofing tiles are sure to retain its position as the best roofing solution for a long time ahead.

Nano Ceramic roof tiles are made by pure nano ceramic technology that gives impeccable quality among other roof tiles available in the market.



**Light Weight & Convenient to handle**  
Easy Laying - Substantially reduces the structure developing Cost



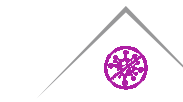
**Excellent Thermal Insulation**  
Its Salient heat resistance properties will make your home cool



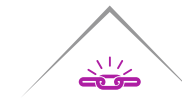
**Air gap Technique Design with air gap**  
Cross ventilation can be accomplish naturally by the unique design



**Excellent Electric Resistance**  
to Electric Discharges  
Eliminates lightning bolt striking your roof



**Anti-Fungal and Anti-Algae**  
With its Anti-microbial properties eliminates fungus and algae



**Strong & Unbreakable**  
Reduces wastage while handling and zero maintenance



**Excellent Noise Damping**  
Advanced insulation property helps in keeping undesirable noise out



**Simply Water Resistant**  
mfp is a homogeneous non porous material which repels water

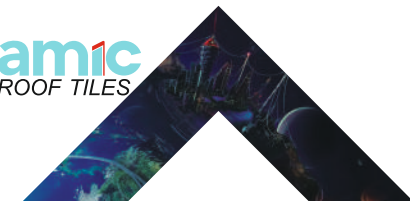


**Re-processable & Eco-friendly**  
hence minimizes the impact on the environment



**High Dimensional Stability(<0.01mm)**  
Manufactured with high precision to maintain identical weight and dimension

**nano ceramic**  
ROOF TILES



What I stand for..

Nothing is immortal. But, as per the composition of certain materials like **mfp**, a life span of the roofing tile may increase to several decades even up to a life time of a human being.

The nano ceramic roof tiles are made for ever lasting durability and colour guarantee which gives the customer a long relief from the uncertainty of the product quality of similar roof tiles which are available in the market.

So, take up with a right decision. Install the nano ceramic roof tiles; prevent the decadence of the paving material of your lovely roof tiles. It prevents the heat ...the rain...the formulation of fungus & algae...the colour fading...the lightning...disturbing noise and fragility...

## Specifications

Architectural drawings for installation - 13

Product Specifications

**EASY INSTALLATION PROCESS**

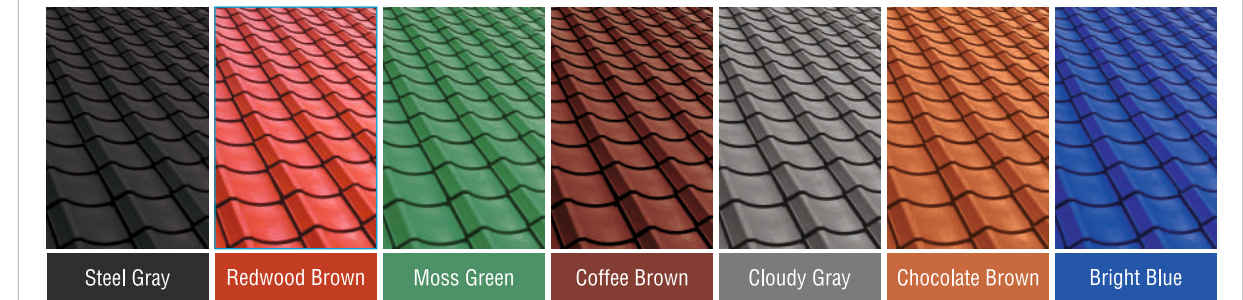
**Material**  
Nano Ceramic  
(Minerals)  
Filled Polymer

**Size**  
305mm  
x  
305mm

**Weight**  
400 g  
only

**Coverage**  
Area/M<sup>2</sup>  
15 Pcs./M<sup>2</sup>

### AVAILABLE COLOURS



**nano ceramic**  
ROOF TILES

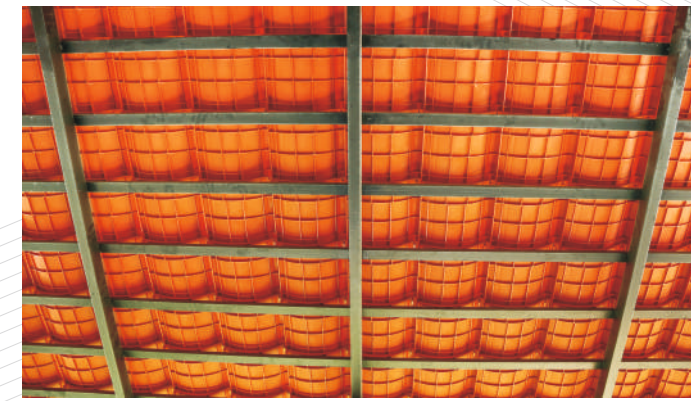
# Specifications

Architectural drawings for installation - 09

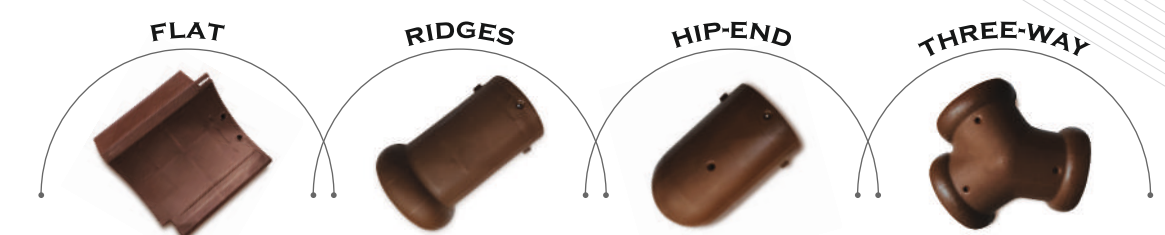
Architectural drawings for installation - 10

Architectural drawings for installation - 11

Architectural drawings for installation - 12



## LIGHT WEIGHT J SERIES (CURVED) TILE WITH ACCESSORIES



### Certifications



### PRODUCT SPECIFICATIONS

Material	- Nano Ceramic (Minerals) Filled Polymer
Size	- 305mm x 305mm
Weight	- 400 g
Coverage Area/M <sup>2</sup>	- 15 Pcs./M <sup>2</sup>



*Harden nature...*

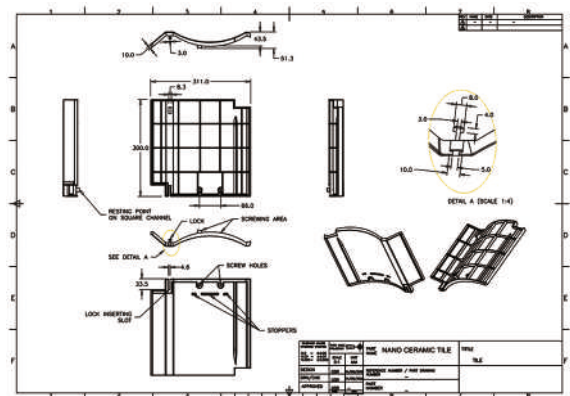
**nano ceramic**  
ROOF TILES



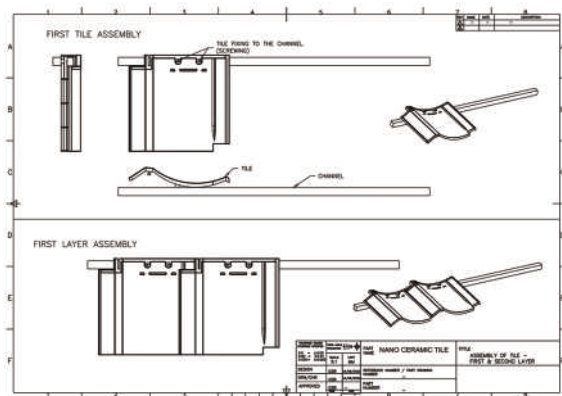
# Specifications

# Specifications

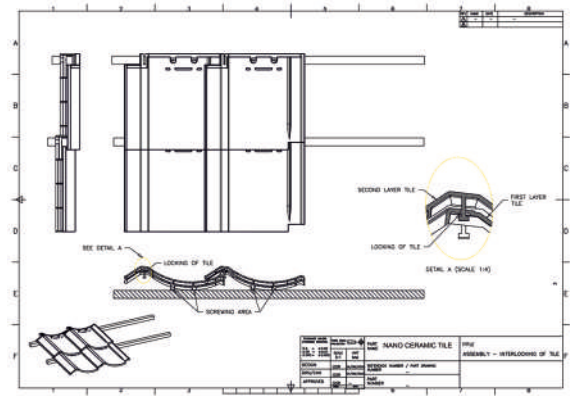
Architectural drawings for installation - 01



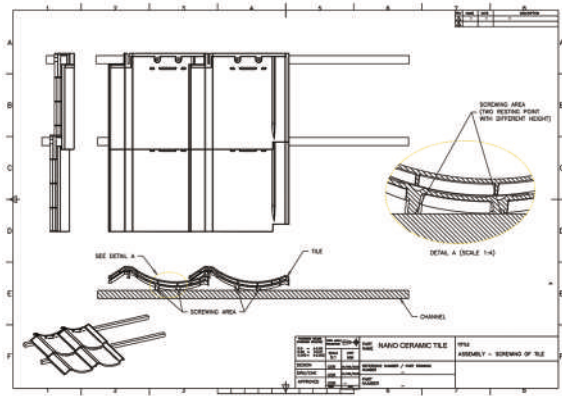
Architectural drawings for installation - 02



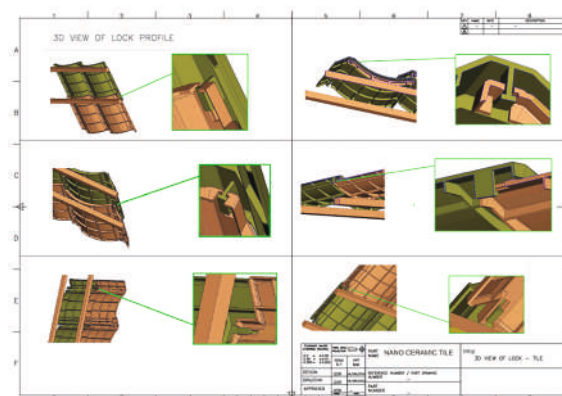
Architectural drawings for installation - 03



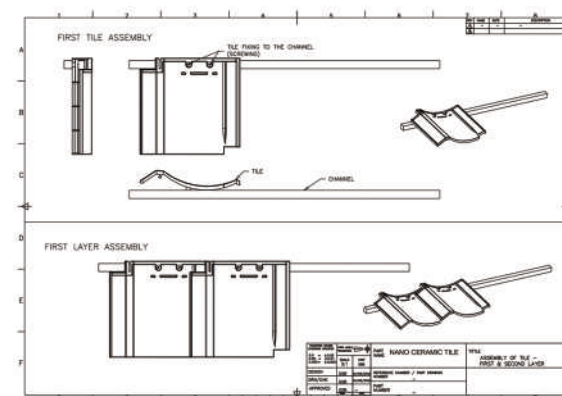
Architectural drawings for installation - 04



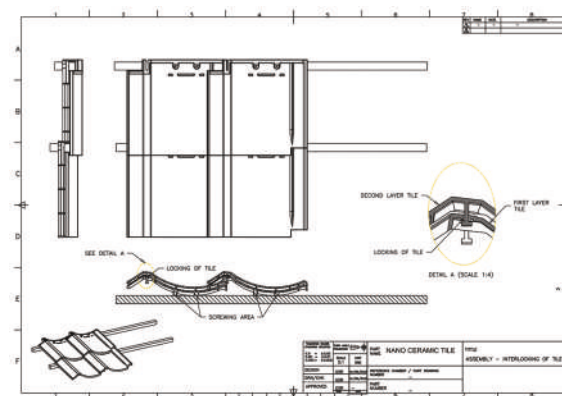
Architectural drawings for installation - 05



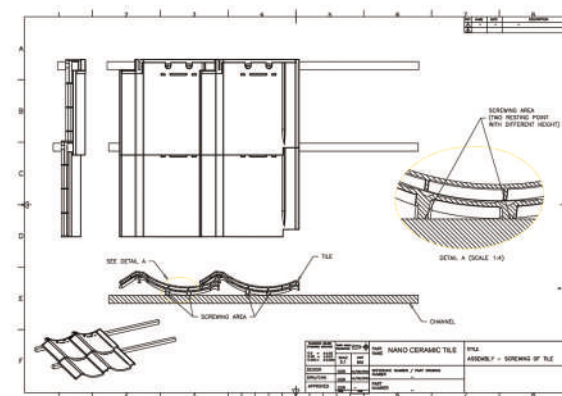
Architectural drawings for installation - 06



Architectural drawings for installation - 07



Architectural drawings for installation - 08



**nano ceramic**  
ROOF TILES